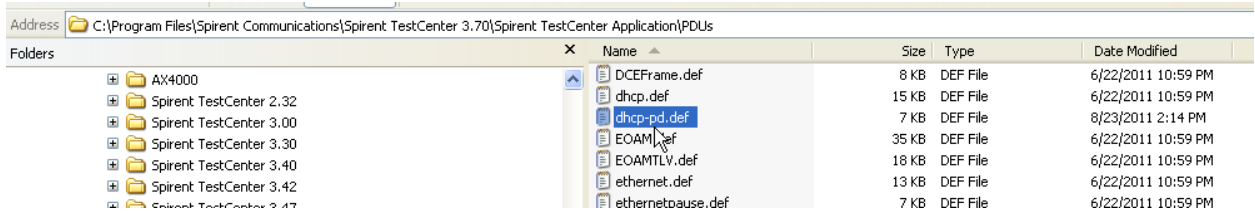
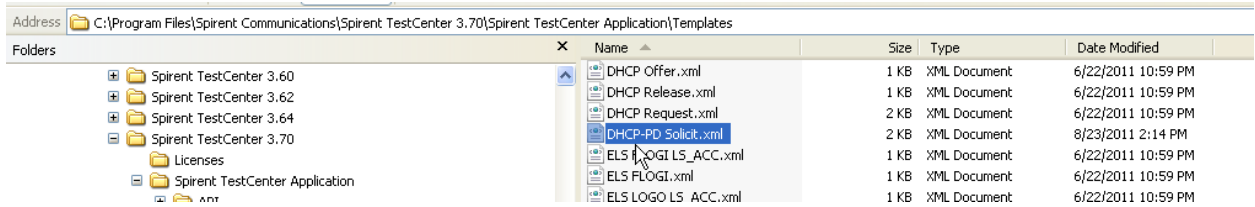


How do you install and use a user-defined PDU template?

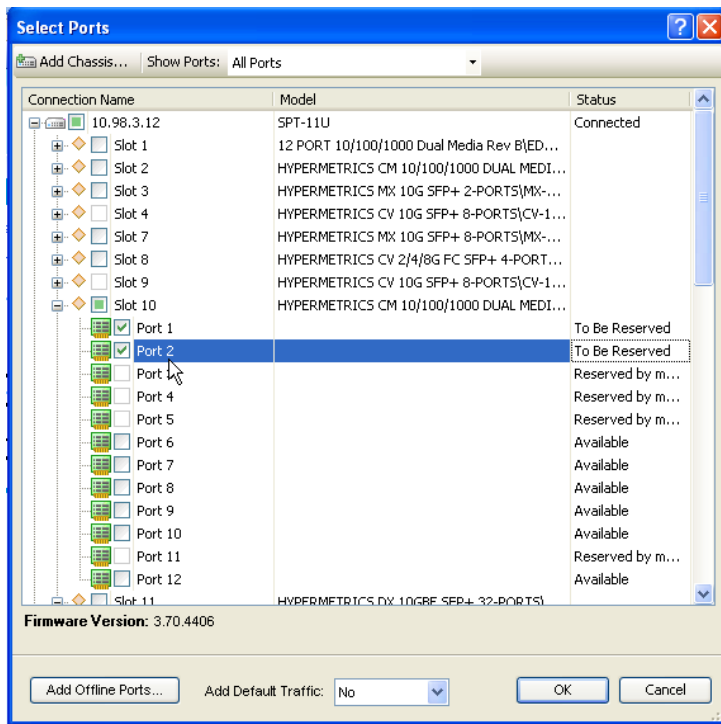
1. Copy the PDU definition file (.def) to the "PDUs" directory.



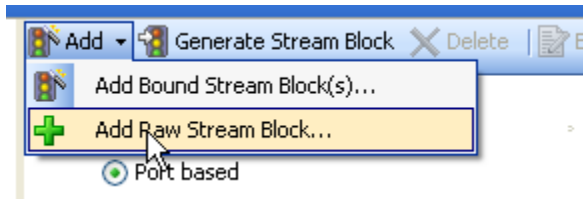
2. Copy the template definition file (.xml) to the "Templates" directory.



3. Launch the GUI and reserve the ports you are going to use.

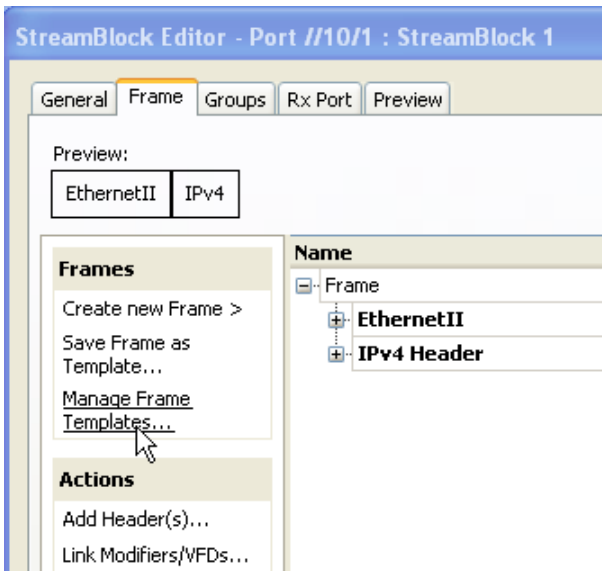


4. Add a stream block. Here I am going to use a raw stream block.

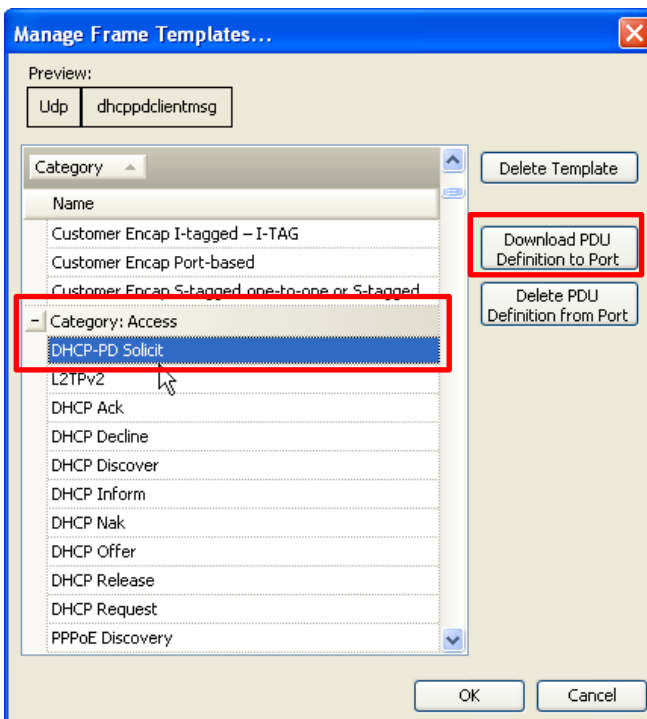


Note you must do steps 5), 6) and 7) for each port you plan to use the new template on. The good news is this is a one-time operation.

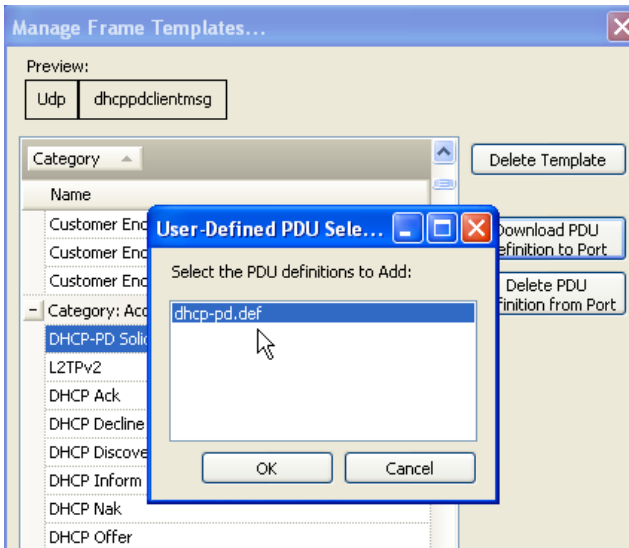
5. When the StreamBlock Editor launches, go to the Frame tab and click on “Manage Frame Templates...”



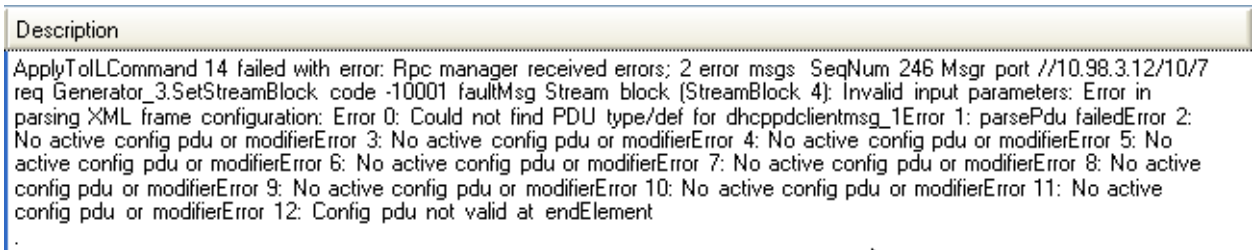
6. The GUI will pick up the new PDU template and add it to the list. Locate and select it and click on “Download PDU Definition to Port”.



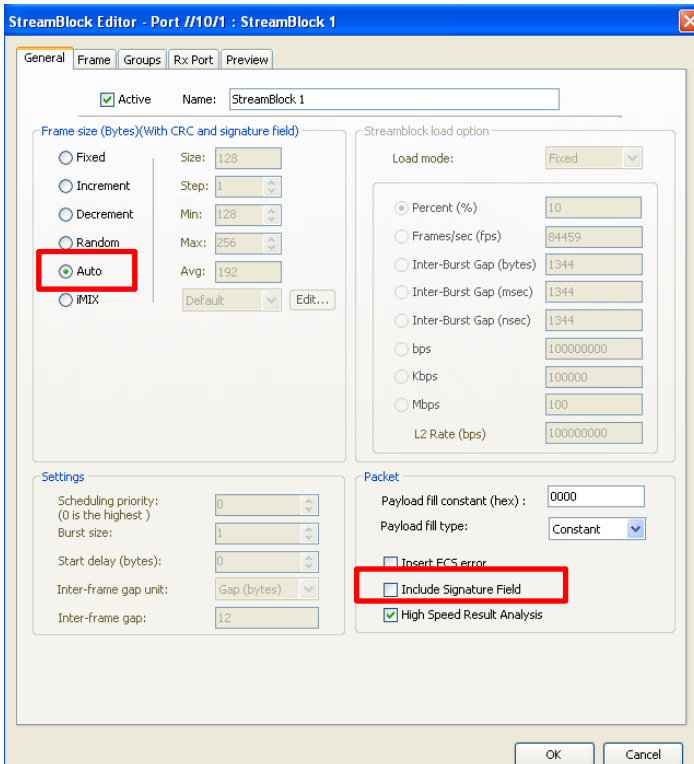
- The “User-Defined PDU Selection” pop up window will appear. Select the PDU definition file and click “OK”.



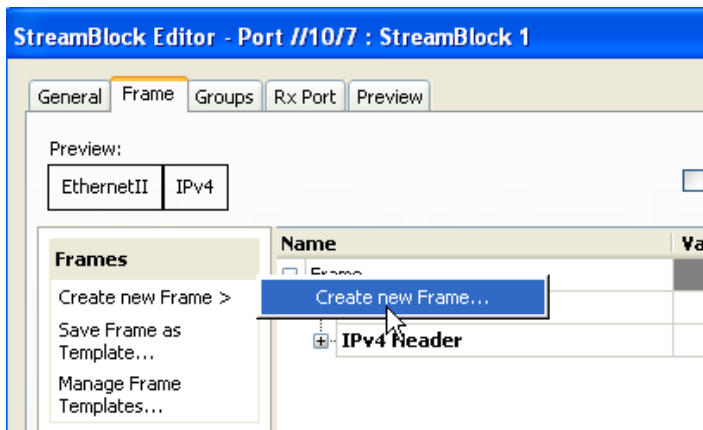
- Click “OK” all the way out and exit and re-launch the GUI. Note if you don’t do this, you will get the following apply time error message.



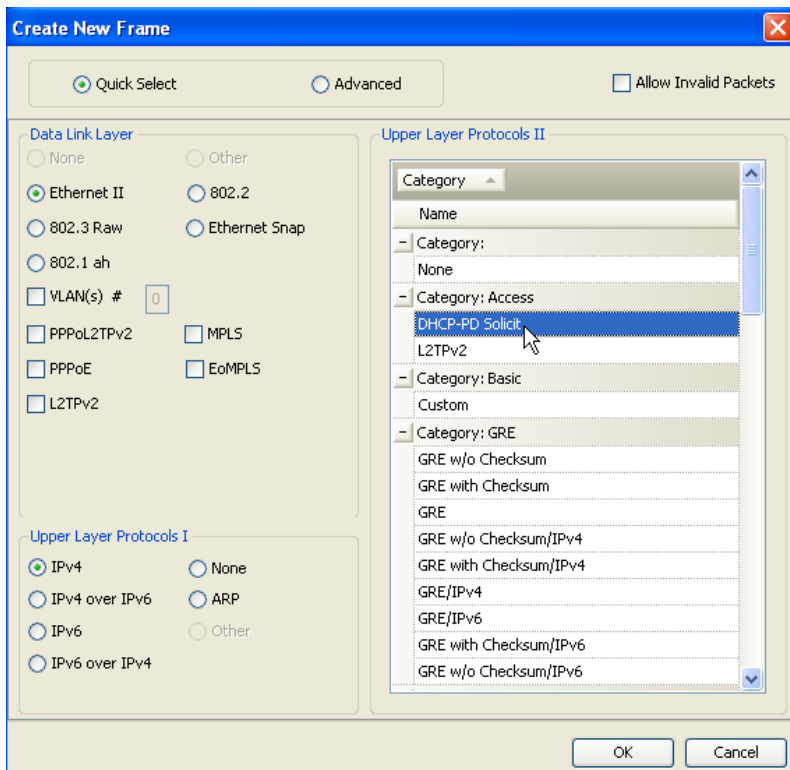
- After the GUI re-launches and you’re reserved the ports, add a new stream block.
- Select Auto frame size and de-select “Include Signature Field”



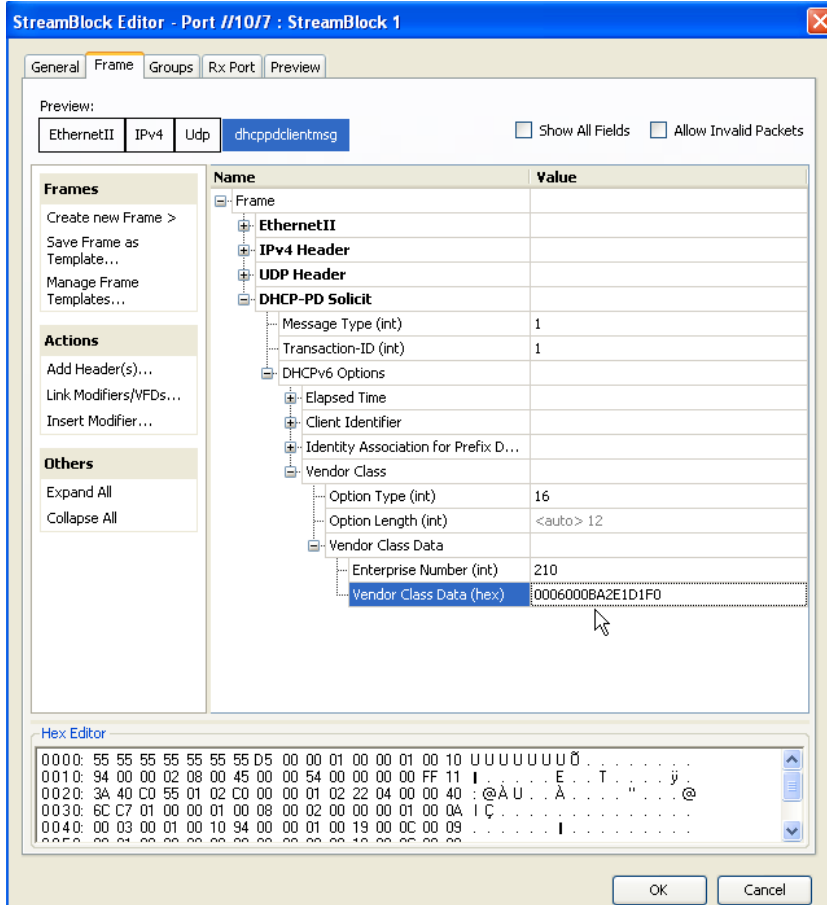
11. Go to Frame tab and click on “Create new Frame >”



12. Select the PDU you want to use and click “OK”.



13. Now you can edit the fields in the PDU you need to. Click “OK” when you are done.



14. Click “Apply” and you are now ready to transmit your user-defined PDU.

